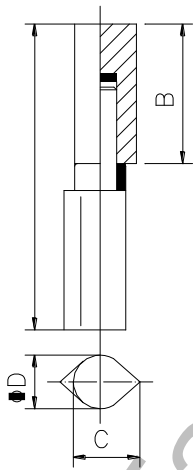

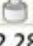


## Панта Estebro® за заваряване капковидна с лагер 20x120 мм, 57



Cod	Dimens.	A	B	∅D	C		
53	AX 14x80	78	37	13	16	28	2,28
54	AX 14x100	98	47	13	16	24	2,50
55	AX 16x100	98	45	16	20	35	5,68
56	AX 16x120	118	55	16	20	25	4,90
57	AX 20x120	118	55	20	25	18	5,50
581	AX 20x140	138	65	20	25	15	5,40
58	AX 20x150	148	70	20	25	15	5,75
72	AX 23x150	148	70	23	29	12	6,10
73	AX 23x180	178	85	23	29	8	4,90

## Drop profile hinge with axial bearing

**Family:** Drop profile hinge

**Material:** 11SMn30 steel

**Maximum weight supported:** According to study

**Description:** Mechanized component very resistant to the corrosion which is installed on a metallic swing door to allow its opening and closing. Its drop shape profile facilitates the welding. The axial bearing installed between both bodies softens the maneuver turn.

All hinge from Ø16 mm on come with grease hole.

Продукт: [Панта Estebro® за заваряване капковидна с лагер 20x120 мм, 57](#)

Категория: [Плъзгащи се врати](#)

Бранд: [Estebro®](#)

Категория бранд: [Панта Estebro®](#)

Ташев-Галвинг ООД  
www.tashev-galving.com